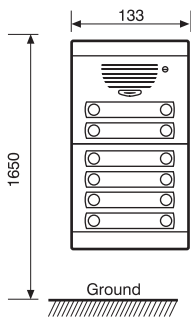


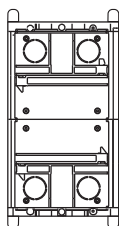
Description

Analogue installation door entry phone kit, 4 wires + n for 1-12 apartments.

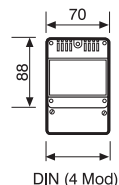
Street panel
Kit A1-A12



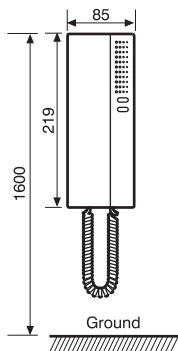
Flush-mounting box
Kit A1-A12



Power supply unit E-30
Cat. No.: 3650 04
Installation on DIN rail
4 modules



Series 7 handset
T-71 E
Cat. No.: 3742 00



Latch
(Not included in the kit),
Characteristics: max. 12 V ~,
880 mA ± 5%
Cat. No.: 3749 00



System operation:

When the street panel pushbutton is pressed, there is call confirmation, which means that the chime sounds both inside and at the street panel. The chimes are electronic and three-tone. From inside, the call can be answered and the street door opened using the latch button on the handset. The handset has a <O> button to actuate auxiliary functions, such as switching on the lighting in the stairwell. The latest generation design of the street panel simplifies installation and improves reliability by increasing weather resistance. The street panel has a pushbutton for illuminating the name holder.

Single line diagram

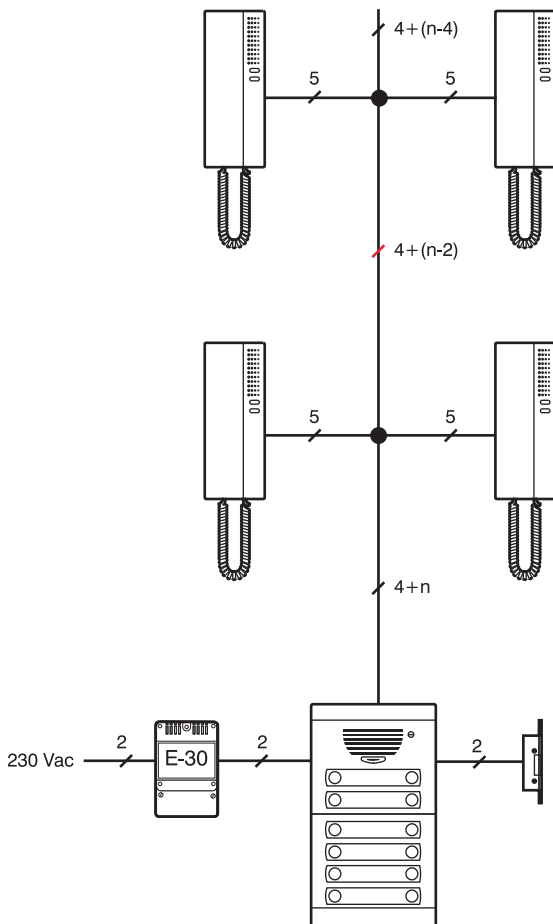


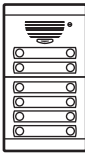
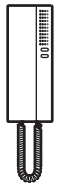
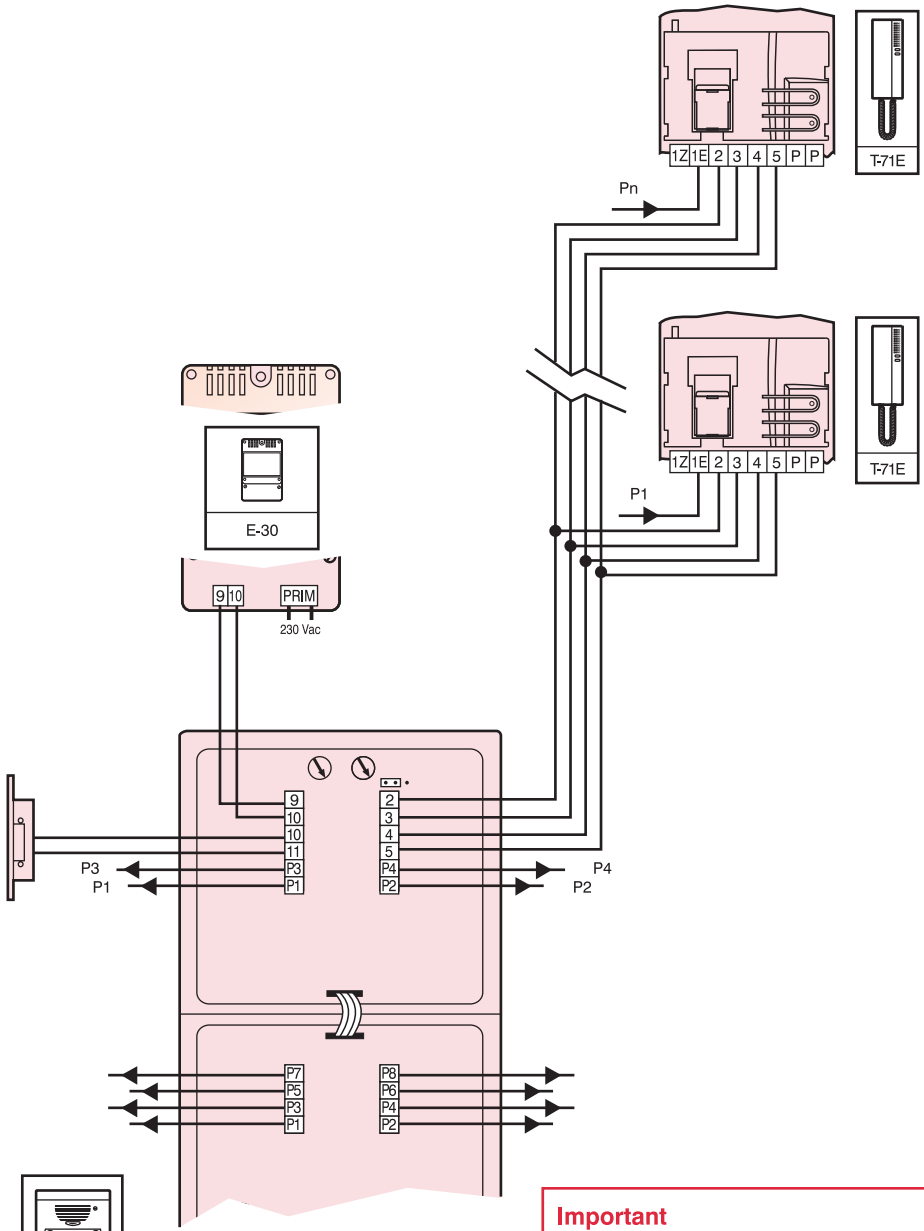


Table of recommended cross-sections

Connections					Number of wires	Min. cross-sections (mm ²)		
						50 m	100 m	200 m
9, 10		↑	↑		2	1	1,5	2,5
2, 3, 4, 5			↑	↑	4	0,25	0,25	0,5
1E			↑	↑	n	0,25	0,25	0,5
10, 11	↑	↑			2	1	1,5	2,5

Installation diagram. One entry.



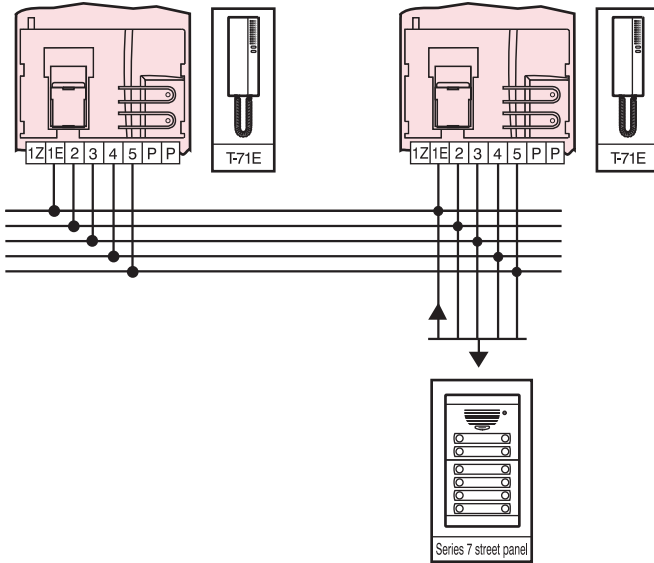
Important
 Select the chime type in the sound unit.

● ● ○ Left jumper: electronic

Extensions

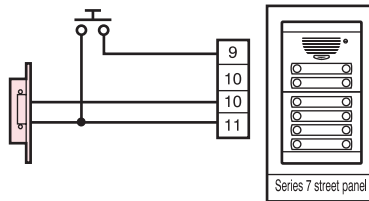
Up to four handsets for the same call.

For two, three or four handsets, multiply the cross-sections by two, three or four (1E, 2, 9, 10).

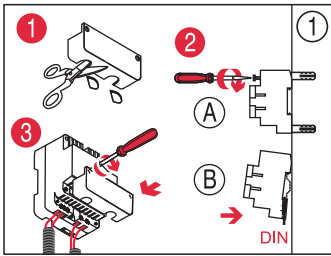


Accessory

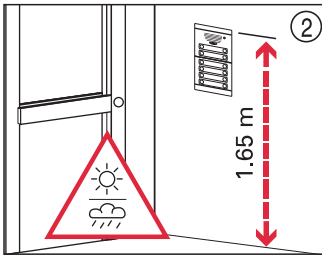
Additional button for door opening.



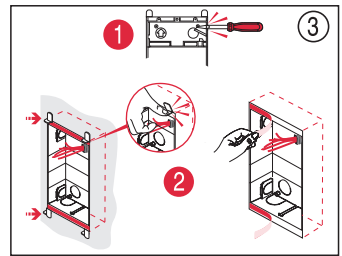
Installation



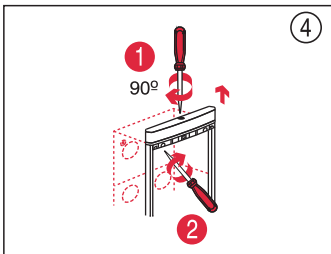
Cut out the wire feed through. Attach the power supply unit to the wall or DIN rail. Connect.



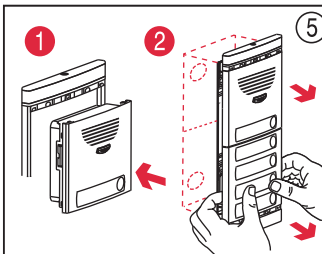
Install the street panel near the door sheltered from the weather.



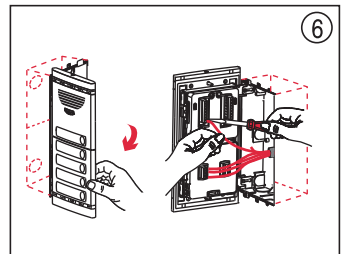
Break out the opening to feed through the cables. Flush mount the box and remove the protections.



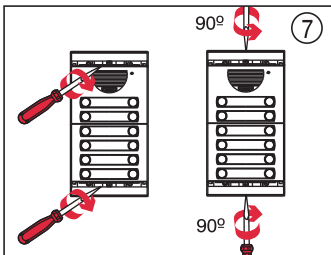
Loosen the frame screws and screw the hinges on the flush-mounting box.



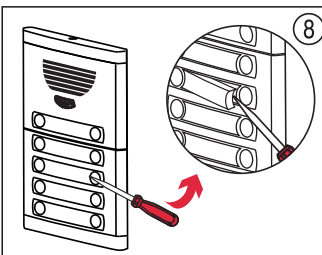
Put the module into the frame. Remove the street panel.



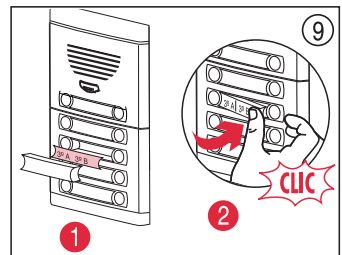
Open the street panel. Make the connection between the modules.



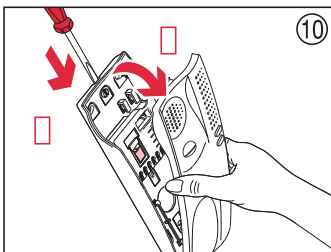
Screw the street panel to the flush-mounting box. Close the frame.



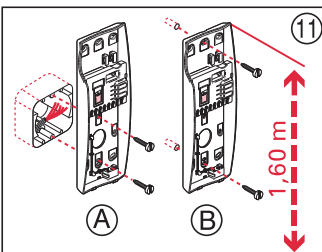
Remove the name-holder



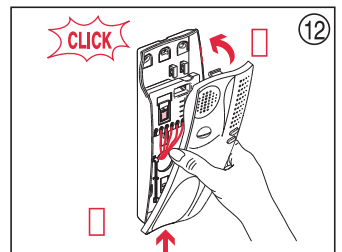
Position the label. Insert one side of the name-holder and swing into place until you hear a click.



Open the handset.

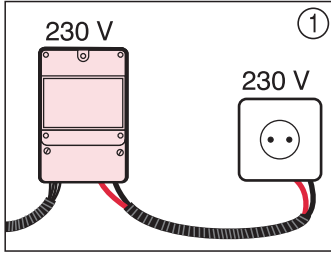


Attach to the wall or universal box at the recommended height.

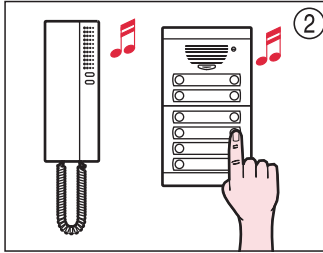


Close the handset.

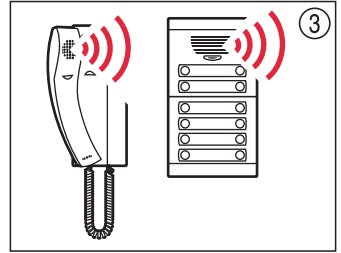
Checking



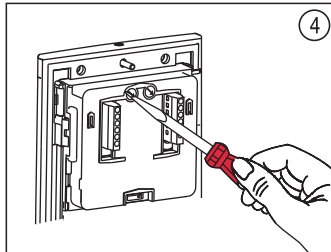
The mains connection is correct.



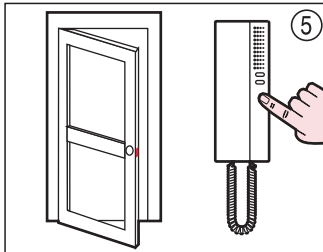
The call sounds in the street panel and in the handset.



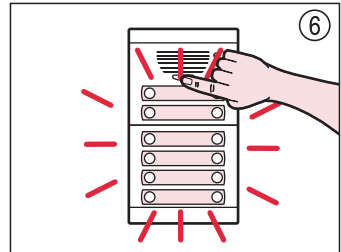
The volume in the street panel and in the handset is correct.



Adjust the volume in the street panel and in the handset.



Check the door opening.



Check the illumination of the label-holder.

Troubleshooting

1. Nothing works.

Check that the voltage in the power supply unit E-30 is approx. 12 V AC between terminals 9 and 10. Repair any short-circuit. Cut off the mains power and all the wires leaving the power supply unit for a few minutes. Connect and check the mains voltage.

2. The illumination of the name-holder does not work.

Check in the sound unit that the voltage is approx. 12 V AC between terminals 9 and 10. If the voltage is correct, the module is defective.

3. Sound feedback (Larsen effect).

Adjust the volume in the sound unit.

4. None of the handsets' sound reaches the street panel.

General installation problem. Check the volume adjustment, the illumination of the light button and the connections between terminals 4 and 2 of the sound unit. If the voltage is correct, the sound unit may be defective.

5. One handset's sound does not reach the street panel.

Handset individual problem. Check the connections between handset terminals 4 and 2. If the voltage is correct, the handset may be defective.

6. No sound from the street panel reaches any handset.

General installation problem. Check the volume adjustment, the illumination of the light button and the connections between terminals 5 and 2 of the sound unit. If the check is satisfactory, the sound unit may be defective.

7. No sound from the street panel reaches one handset.

Handset individual problem. Check the connections between handset terminals 5 and 2. If the voltage is correct, the handset may be defective.

8. No handset receives the call from the street panel.

Check that the lighting button operates correctly. The call setting jumper must be positioned to electronic mode according to the diagram. If the check is satisfactory, the sound unit may be defective.

9. One handset does not receive the call from the street panel.

Check the connection of the pushbutton at terminal 1E of the handset. If the voltage is correct, the handset may be off-hook or defective.

10. The latch does not operate from any handset.

The lock must be powered. Check in the sound unit that the voltage is approx. 12 V AC between terminals 9 and 10. If not, refer to point No. 1. Press the latch button and check in the sound unit that the voltage is approx. 12 V AC between the terminals 10 and 11. If not, the sound unit may be defective. If the voltages are correct, the problem is caused by the latch.

11. The latch does not operate from one handset.

Check the connections between handset terminals 2 and 3. At rest the voltage must be between 8 and 9 V DC and when actuating the latch 0 V DC. If the voltages are not correct, the handset may be defective.