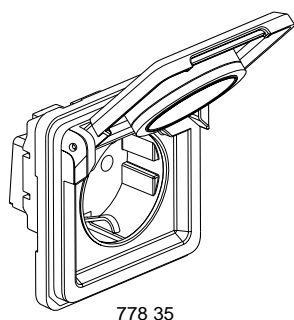
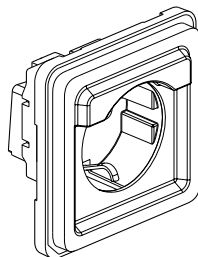


Soliroc™ IK 10 vandalproof
German standard socket outlet - 16 A - 250 V

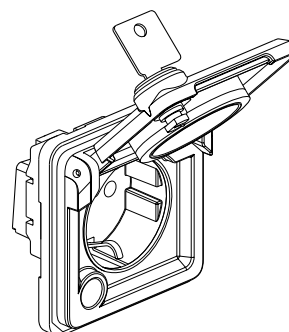
Cat. Nos.: 778 35/36/37



778 35



778 36



778 37

1. USE

Soliroc socket outlets are available with or without flap cover (simple flap or locked flap).

The new Soliroc™ IK10 programme guarantees robust impact resistance in environments that are hazardous or unsupervised, whether indoors or outdoors (warehouses, public buildings, motorway services, offices, shops, schools, prisons, etc.).

The 5 commitments of the SOLIROC range.

Security: the IK10 rating (20 joule impact force) guarantees optimal resistance and protection against vandalism. It is impossible to tear off a SOLIROC switch due to the use of four zamak sealing plugs on the plate (removable only by drilling).

Reliability: the IP55 rating guarantees a long useful lifetime whether indoors or outdoors. All external parts are made of zamak for optimal robustness.

Practicality: the plate is deliberately thin, thereby limiting the amount of possible grip and reducing the risk of attempted tear-off. There is minimal space between parts, guaranteed by the IP5X rating (impenetrable by solid bodies greater than 1 mm in diameter and protected against dust).

Installation: Depends on the nature of the building. We recommend using 50 mm-deep multi-material or concrete BATIBOX mounting boxes (40 mm accepted).

To guarantee the best tear-off resistance:

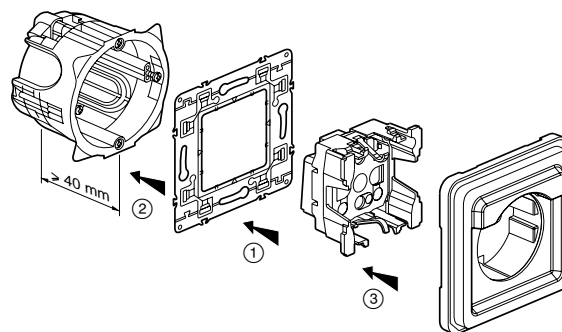
- Attach the SOLIROC plates using 4 standard screws (4 mm diameter, 40 mm length).
- Select wall plugs according to the nature of the walls. For concrete walls, we recommend expanding nylon wall plugs (6 mm diameter, useful length 40 mm).

Quality control: factory inspection according to ISO 9001/9002 procedures.

2. RANGE

	Designation	Cat. No.	Number of modules	Connection method	Weight (g)	General characteristics
	2 P + E socket with flap 16 A - 250 V Shuttered for child safety German standard	778 35	2	with screws	213	16 A - 250 V
	2 P + E socket without flap 16 A - 250 V Shuttered for child safety German standard	778 36	2	with screws	126	16 A - 250 V
	2 P + E socket with locked flap 16 A - 250 V Supplied with a set of 2 keys "2A28" (supplier DOM) Shuttered for child safety German standard	778 37	2	with screws	227	16 A - 250 V

3. INSTALLATION

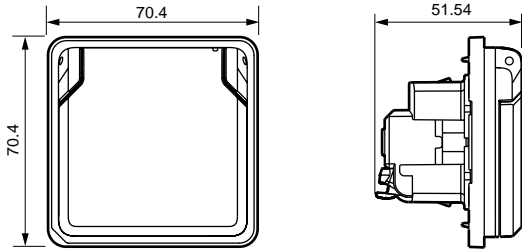


Soliroc™ IK 10 vandalproof
German standard socket outlet - 16 A - 250 V

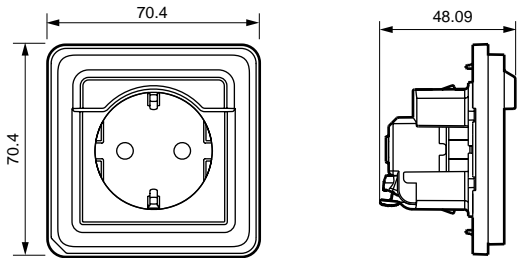
Cat. Nos.: 778 31/32/33

4. OVERALL DIMENSIONS

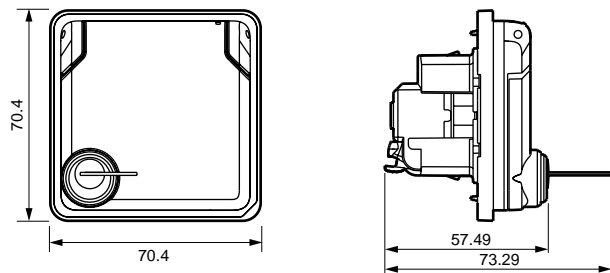
778 35



778 36



778 37



5. CONNECTION

Terminal capacity: 2 x 4 mm²
 Connection: screw type terminals
 Stripping length: 9 mm
 Screwdriver: Posidriv 1 - Philips No. 1 - Flat blade 4 mm
 Tightening torque: 0.5 Nm

6. OPERATION

Usual operation by inserting or withdrawing a standardized plug.

7. TECHNICAL DATA

7.1 Mechanical characteristics

Impact resistance: IK 10
 Protection by solid liquid/bodies: IP 55 for Cat. Nos.: 778 35/37
 IP 20 for Cat. No.: 778 36

7.2 Material characteristics

Mechanism: grey polycarbonate
 Rocker: zamak
 Sub-plate made of polycarbonate
 Surface treatment: copper plating + acid copper plating + matt nickel plating + approximately 0.1 mm thick chrome plating.
 Colour: matt chrome grey.
 These devices comply with standard NF EN 62094-1 (2003), degree of severity 850° C for components made of insulating material supporting the current-carrying elements and 650° C for the other components.

7.3 Climatic characteristics

Storage temperature: - 10° C to + 70° C
 Operating temperature: - 5° C to + 40° C

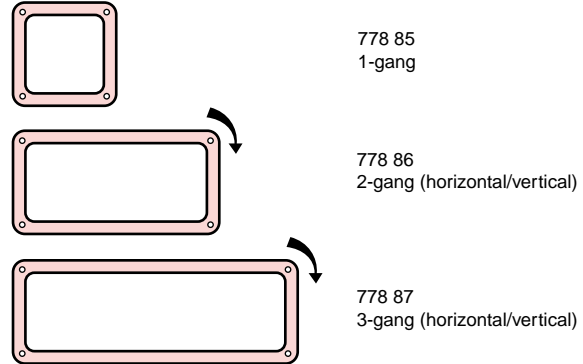
8. MAINTENANCE CLEANING

Bound to cleaning agents without damage agents as:
 Hexane, Alcohol burning, Agent for the window, Washing diluted bleach 10%, Graffiti remover, Acetone, White spirit, Gasoline F.

9. ACCESSORIES

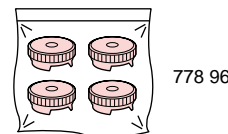
9.1 Foam seals

Material: EPDM (Ethylene, Propylene, Diene, Monomer).
 Compensates for major wall defects.



9.2 Sealing plug

Spare plugs delivered in bags of 4, with 5 bags to a box and 10 boxes to a carton.



9.3 Surface mounting frames

Material: polyester
 Max depth: 38 mm
 ISO 20 cable glands can be mounted: Cat. No. 968 03 (+ nut 968 43) and Cat. No. 955 03 (+ nut 979 83)
 Tested according to the flame of the lighter.

