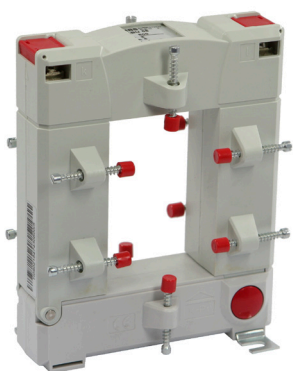
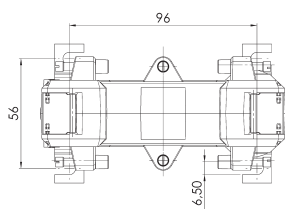
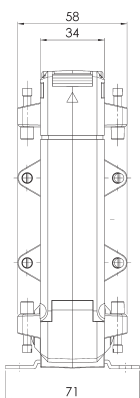
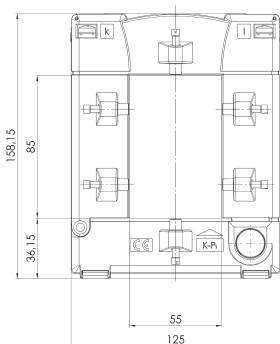


KBU 58

Kabelumbau-Stromwandler



Schiene 1 50 x 80 mm
 Rundleiter 50 mm
 Baubreite 125 mm
 Bauhöhe 158 mm
 Bautiefe gesamt 58 mm



Primärstrom [A]	Bürde [VA]	Sekundärstrom [A] / Klasse			
		5 A Kl. 1 Best.-Nr.	5 A Kl. 0,5 Best.-Nr.	1 A Kl. 1 Best.-Nr.	1 A Kl. 0,5 Best.-Nr.
250	1,5	80061		80261	
300	2,5	80062		80262	
400	1		80038		80238
	2,5	80063		80263	
500	2,5		80054		80254
	5	80064		80264	
600	2,5		80055		80255
	5	80065		80265	
750	2,5		80056		80256
	5	80066		80266	
800	2,5		80057		80257
	7,5	80067		80267	
1000	5		80058		80258
	10	80068		80268	

ASR

ASG

AS / ASK

WSK

KBU

KSU / SUJK

NH

SASR / SASK

ASRD

ASKD / WSKD

CTB