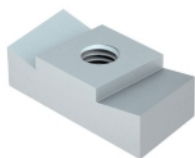


Gleitmutter



Gleitmutter zur Verwendung mit Profilschiene MS4022

Typ	Länge mm	Breite mm	Höhe mm	Ge- winde	Verp. Stück	Gewicht kg/100 St.	Art-Nr.
MS40SN M6 ZL	35	17	10	M6	50	3,750	1147106
MS40SN M8 ZL	35	17	10	M8	50	3,600	1147110
MS40SN M10 ZL	35	17	10	M10	50	3,400	1147114
MS40SN M12 ZL	35	17	10	M12	50	3,160	1147118
MS40SN M6 A4	35	17	10	M6	50	3,750	1147126
MS40SN M8 A4	35	17	10	M8	50	3,600	1147130
MS40SN M10 A4	35	17	10	M10	50	3,400	1147134
MS40SN M12 A4	35	17	10	M12	50	3,160	1147138

St Stahl **V4A** Edelstahl, rostfrei A4

ZL Zinklamelle

Abmessungen

